

## Circuit Safe® Pushbutton Enclosures

UL® Listed per UL 50 for Industrial Controls.  
Meets NEMA 1, 3, 3S, 3X, 3SX, 4, 4X, 12, 13.



### Narrow-Profile Blank Screw Cover Enclosures for Small Instrumentation and Control Applications

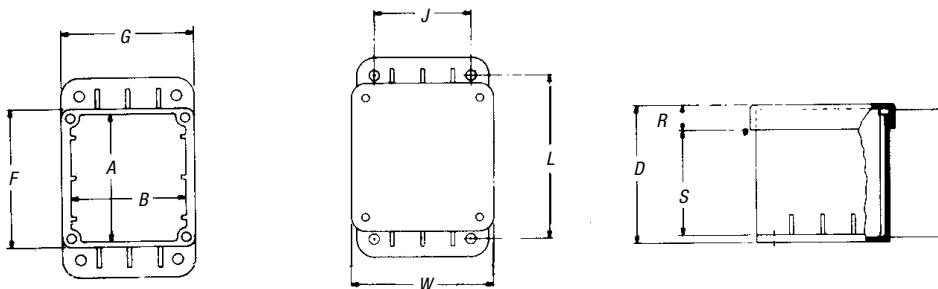
Blank cover enclosures can be easily drilled with a standard hole saw for conduit entries and pushbuttons. Wallmount enclosures are molded from gray, engineered thermoplastic material and are resistant to most corrosive agents.

#### Features:

- Brass screw inserts
- Material: nylon base and cover
- Integrally molded mounting flange
- 304 (18-8) stainless screws (10-32/8")
- Temperature range: -40° to 185° F



Boxes & Covers — Carlton® Enclosures & Junction Boxes



#### Blank Screw Cover Enclosures\*†

CAT. NO.	STYLE	INSIDE BOX SIZE A X B X C	MOUNTING L X J	OVERALL OUTSIDE INCLUDING MOUNTING BRACKET H X W X D					STD. CTN.	STD. WT. (LBS.)		
				F	G	R	S	X				
CP100NB	Blank Cover	3.13 x 2.81 x 3	4 x 2.38	4.88	3.50	3.38	3.38	3.25	.63	2.5	12	9.60
CP200NB	Blank Cover	5.38 x 2.81 x 3	6.25 x 2.38	7.13	3.50	3.38	5.63	3.25	.63	2.5	8	8.8
CP300NB	Blank Cover	7.38 x 2.81 x 3	8.50 x 2.38	9.38	3.50	3.38	7.88	3.25	.63	2.5	6	8.20

\* All Circuit Safe pushbutton enclosures are furnished with standard hole dimensions: 1/8" diameter with keyways at 12 o'clock and 3 o'clock

† Dimensions are in inches unless marked otherwise.